

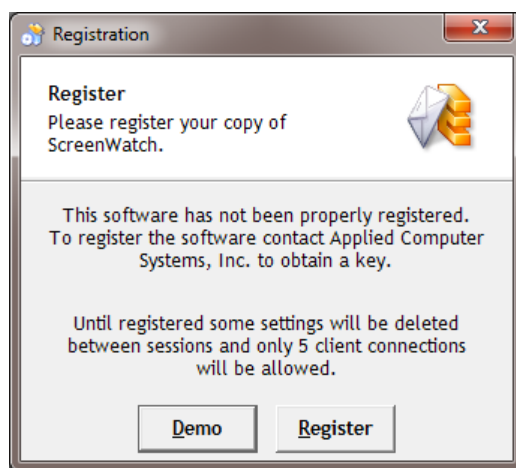
## Why Does ScreenWatch Say the Software is Unregistered When It Starts?

### Summary

I purchased ScreenWatch and installed it on my instructor's workstation. When starting the Monitor, a registration window appears, why?

### Details

When ScreenWatch is initially installed, it is installed as a demo. The Registration window will continue to appear during each launch of the ScreenWatch Monitor until the software is registered. When operated under Demo, ScreenWatch will limit student connections to five workstations.



Register ScreenWatch by following these steps:

1. Select Register
2. Enter your Name and Company Name
3. Call Applied Computer Systems, Inc. toll-free at 800-237-5465 between the hours of 8am-5pm EST, Monday-Friday with the Serial Number provided in the registration window.
4. Enter the Activation Code provided by the ACS customer support agent.
5. Select OK

