

Installing and configuring SoftLINK for Android

SoftLINK delivers the tools you need to help maximize the effectiveness of computer-led teaching on Android devices.

The SoftLINK/NetSupport School Student for Android can be installed on each Android tablet. From the teacher's desktop, you can then connect to each system enabling you to interact with each student quickly and efficiently.

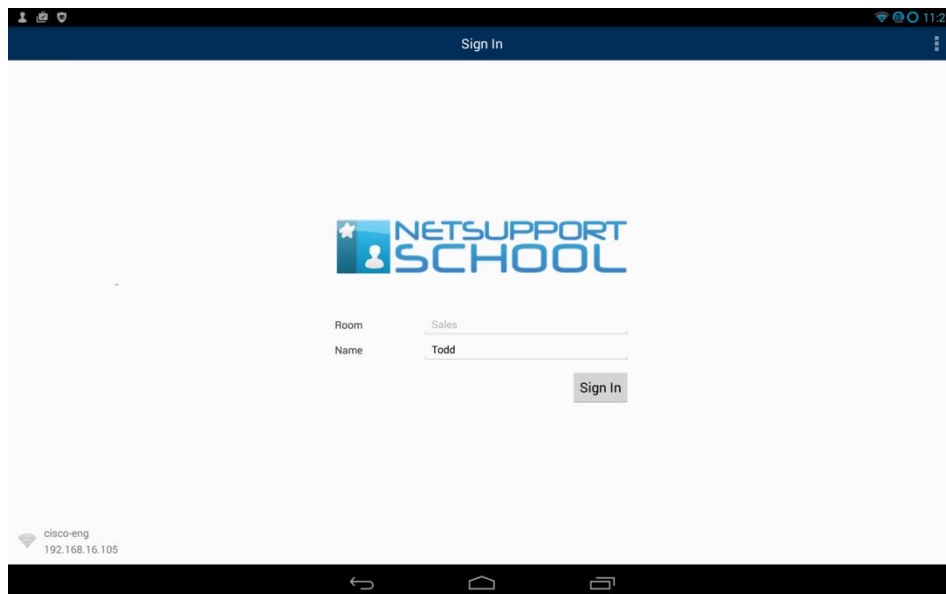
The SoftLINK/NetSupport School Student for Android app works on Android v4.0 or later tablets and is available for free from the [Google Play](#) store.

Set up and configure the SoftLINK/NetSupport School Student for Android

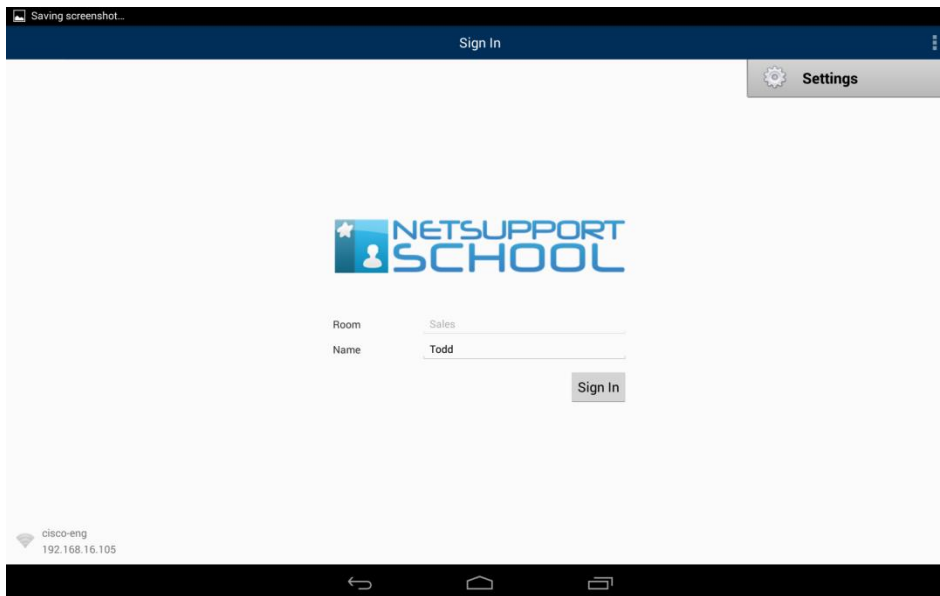
You can pre-configure each device with the required password-protected classroom connectivity settings manually at each device or remotely by 'pushing' the settings to each device from within the SoftLINK Tutor program:

Manual Configuration

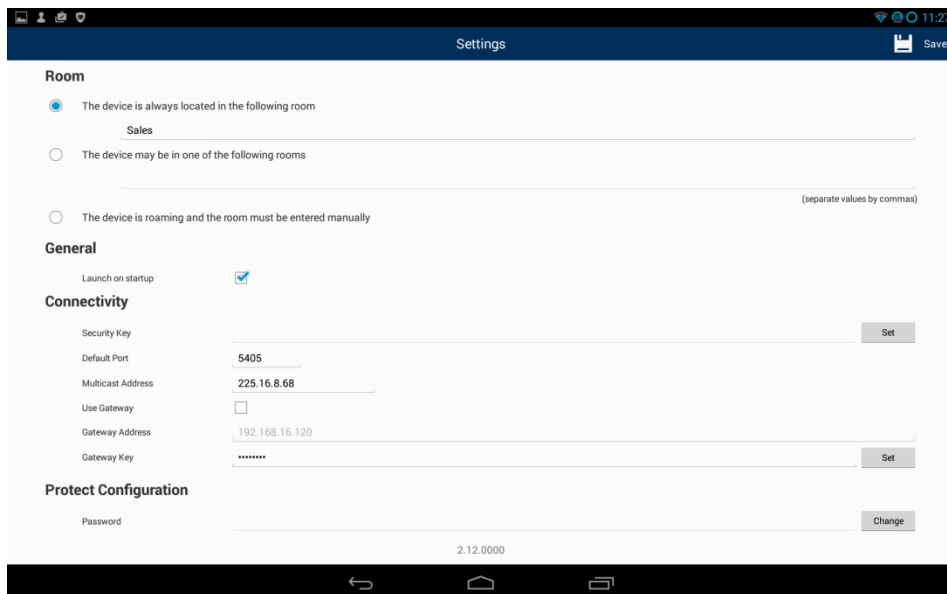
- 1) After installing the School for Android app on the device, start the app and wait for the Sign In screen to appear.



- 2) Select the menu button in the upper right hand corner.



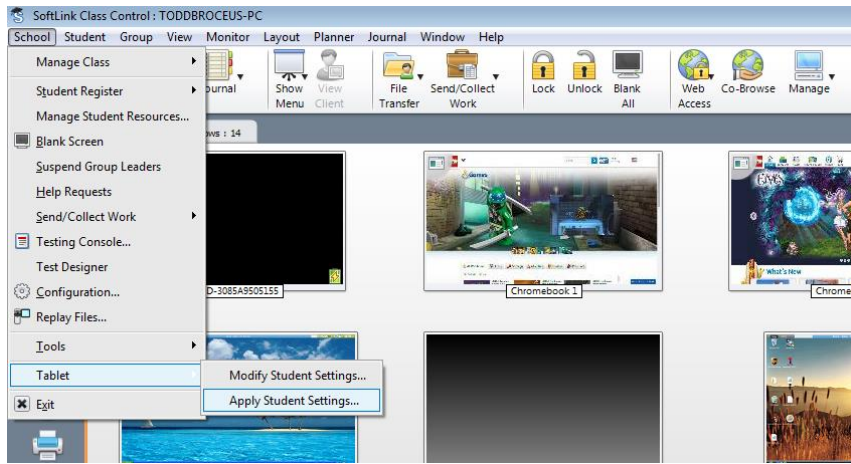
3) Select Settings.



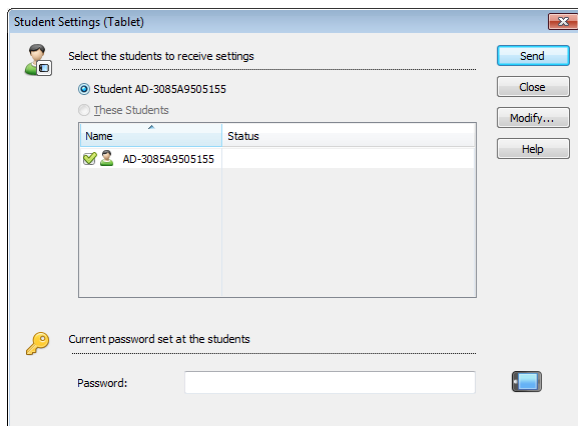
- 4) Select one of the Room options, entering the names of the rooms you wish for this device to connect to.
- 5) Select Launch on startup if you wish for the app to launch automatically without user intervention.
- 6) Modify the port number if you would like communication to occur over a different port. This setting would need changed at the Tutor Console as well.
- 7) Select Save from the Menu.
- 8) You can now browse for Android Students in Room mode.

Remote Configuration

- 1) Select {School}{Tablet}{Apply Student Settings} from the Control drop-down window.



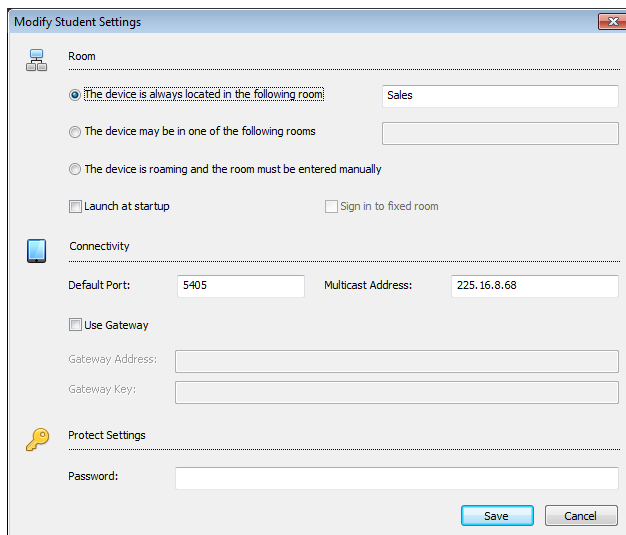
2) The Student Settings dialog will appear.



3) Select the students you wish to send the settings to.

4) To amend the configuration settings click **Modify**.

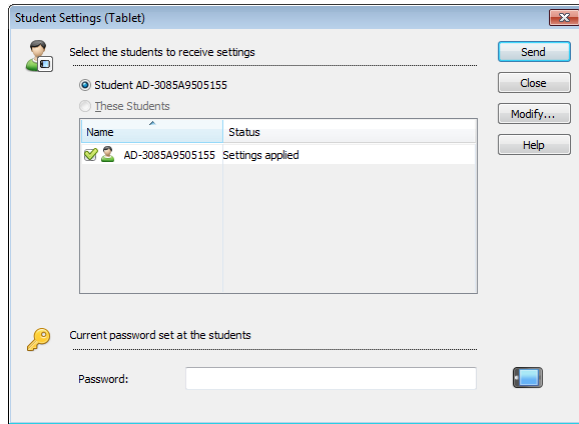
5) The Modify Student Settings dialog will appear.



6) Set the required options and click **Save**.

7) If a password has already been set at the Android device, enter this.

8) Click **Send**.



9) You can now browse for Android Students in Room mode.

If you selected the 'Tablet students only' license type during installation, the SoftLINK Tutor will only display the features that are supported for Tablet Students.

Note: In certain environments, the SoftLINK Tutor Console may not locate the Android Students during its browse. For further information on how to locate and connect to Android devices, please visit our Knowledge Base at <http://support.acs-linksystems.com/> and search for Knowledge Base article [KB0153](#), "What to do if the Android Students are not found by SoftLINK's Tutor Console browse at Startup."

Features supported on Android:

- Student Register.
- Lesson objective.
- Receive Messages from the Tutor.
- Student Request help.
- Group or 1:1 Chat.
- Student Survey.
- Lock/Unlock student computers.
- Real Time Instruction (Show Mode).
- View Student thumbnails*.
- Watch Student screen*.
- Student rewards.
- WiFi/battery indicators.
- Launch URL at the Student.
- Blank Student screen.
- Question and Answer mode.
- File Transfer.
- File Distribution.
- Launch at Startup. The SoftLINK/NetSupport School Student for Android will launch when the device is powered on and will automatically sign in (where the device is located in a fixed room).

* These features are only available on Android devices that have been signed by the manufacturer.

Licensing for Tablets

Each Android or iOS Tablet that connects to the SoftLINK Tutor needs to be licensed. Licenses for Tablets can be purchased independently of the main SoftLINK product and are registered with SoftLINK by loading a new License file (NST.LIC). This file controls the number of Tablet Students that can connect. If this file is not present, then the usual License File (NSM.LIC) will allow Tablet Students to connect but this will reduce the License count available for Windows SoftLINK Students.

e.g.

With both an NSM.LIC (10 User) and NST.LIC (10 user) the software will independently limit to 10 connections of each type. With 10 Tablet Students connected, the 11th Tablet Student would be rejected.

With just a NSM.LIC (20 User) the software would limit to a maximum of 20 connections of regardless of whether they are from Tablet Student or Windows SoftLINK Students.